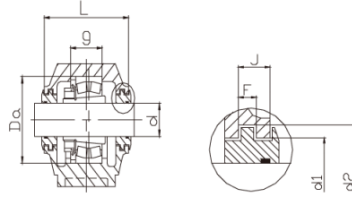
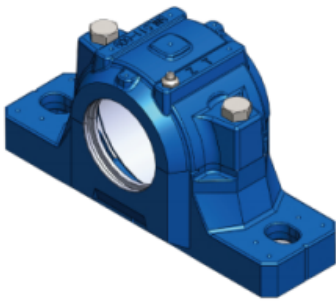


# SNL500 Series



Housing No.	Shaft dia	Dimensions															Housing Wt(kg)	Bearing No.	Adapter Sleeve	Locating Ring		
		h	a	e	b	u	V	c	W	L	d1	d2	J	F	g	Da				S	Number	QTY
SNL505	20	40	165	130	46	15	20	19	74	67	31.5	39.5	7.5	5	25	52	M10	1.9	1205K	H205	SR52x5	2
SNL506-605	25	50	185	150	52	15	22	22	89	77	36.5	44.5	7.5	5	32	62	M10	2.2	1206K	H206	SR62x5	2
SNL507-606	30	50	185	150	52	15	20	22	93	82	46.5	54.5	7.5	5	34	72	M10	2.4	1207K	H207	SR72x8.5	2
SNL507-606	30	50	185	150	52	15	20	22	93	82	46.5	54.5	7.5	5	34	72	M10	2.4	22207K	H307	SR72x5.5	2
SNL508-607	35	60	205	170	60	15	20	25	108	85	51.5	59.5	7.5	5	39	80	M12	3.2	1208K	H208	SR80x10.5	2
SNL508-607	35	60	205	170	60	15	20	25	108	85	51.5	59.5	7.5	5	39	80	M12	3.2	22208K	H308	SR80x8	2
SNL508-607	35	60	205	170	60	15	20	25	108	85	51.5	59.5	8.5	5	30	85	M12	3.5	1209K	H209	SR85x5.5	2
SNL509	40	60	205	170	60	15	20	25	109	85	56.5	64.5	8.5	5	30	85	M12	3.5	22209K	H309	SR85x7	1
SNL510-608	45	60	205	170	60	15	20	25	113	90	62	70.5	8.5	5	41	90	M12	3.85	1210K	H210	SR90x10.5	2
SNL510-608	45	60	205	170	60	15	20	25	113	90	62	70.5	8.5	5	41	90	M12	3.85	22210K	H310	SR90x9	2
SNL511-609	50	70	255	210	70	18	23	28	128	95	67	75.5	8.5	5	44	100	M16	5.2	1211K	H211	SR100x11.5	2
SNL511-609	50	70	255	210	70	18	23	28	128	95	67	75.5	8.5	5	44	100	M16	5.2	22211K	H311	SR100x9.5	2
SNL512-610	55	70	255	210	70	18	23	30	134	105	72	80.5	8.5	5	48	110	M16	6.7	1212K	H212	SR110x13	2
SNL512-610	55	70	255	210	70	18	23	30	134	105	72	80.5	8.5	5	48	110	M16	6.7	22212K	H312	SR110x10	2
SNL513-611	60	80	275	230	80	18	24	30	149	110	77	85.5	8.5	5	51	120	M16	7.9	1213K	H213	SR120x14	2
SNL513-611	60	80	275	230	80	18	24	30	149	110	77	85.5	8.5	5	51	120	M16	7.9	22213K	H313	SR120x10	2
SNL515-612	65	80	280	230	80	18	26	30	155	115	87	95.5	8.5	5	56	130	M16	7.7	1215K	H215	SR130x15.5	2
SNL515-612	65	80	280	230	80	18	26	30	155	115	87	95.5	8.5	5	56	130	M16	7.7	22215K	H315	SR130x12.5	2
SNL516-613	70	95	315	260	90	22	29	32	177	120	92.5	101	10.5	5	58	140	M20	11	1216K	H216	SR140x16	2
SNL516-613	70	95	315	260	90	22	29	32	177	120	92.5	101	10.5	5	58	140	M20	11	22216K	H316	SR140x12.5	2
SNL517	75	95	320	260	90	22	30	32	183	125	97.5	106	10.5	5	61	150	M20	12.7	1217K	H217	SR150x16.5	2
SNL517	75	95	320	260	90	22	30	32	183	125	97.5	106	10.5	5	61	150	M20	12.7	22217K	H317	SR150x12.5	2
SNL518-615	80	100	345	290	100	22	27	35	194	140	102.5	111	10.5	5	65	160	M20	14.8	1218K	H218	SR160x17.5	2
SNL518-615	80	100	345	290	100	22	27	35	194	140	102.5	111	10.5	5	65	160	M20	14.8	22218K	H318	SR160x12.5	2
SNL518-615	80	100	345	290	100	22	27	35	194	140	102.5	111	10.5	5	65	160	M20	14.8	23218K	H2318	SR160x12.5	1
SNL519-616	85	112	345	290	100	22	27	35	212	145	131	141	11.5	6	68	170	M20	15.5	1219K	H219	SR170x18	2
SNL519-616	85	112	345	290	100	22	27	35	212	145	131	141	11.5	6	68	170	M20	15.5	22219K	H319	SR170x12.5	2
SNL520-617	90	112	380	320	110	26	32	40	218	160	137.5	147.5	11.5	6	70	180	M24	18.4	22220K	H320	SR180x12	2
SNL520-617	90	112	380	320	110	26	32	40	218	160	137.5	147.5	11.5	6	70	180	M24	18.4	23220K	H2320	SR180x9.7	1
SNL522-619	100	125	410	350	120	26	32	45	242	175	147.5	157.5	11.5	6	80	200	M24	24.8	1222K	H222	SR200x21	2
SNL522-619	100	125	410	350	120	26	32	45	242	175	147.5	157.5	11.5	6	80	200	M24	24.8	22222K	H322	SR200x13.5	2
SNL522-619	100	125	410	350	120	26	32	45	242	175	147.5	157.5	11.5	6	80	200	M24	24.8	23222K	H2322	SR200x102	1
SNL524-620	110	140	410	350	120	26	32	45	271	185	157.5	167.5	11.5	6	86	215	M24	32.2	22224K	H3124	SR215x14	2
SNL524-620	110	140	410	350	120	26	32	45	271	185	157.5	167.5	11.5	6	86	215	M24	32.2	23224K	H2324	SR215x10	1
SNL526	115	150	445	380	130	28	35	50	290	190	167.5	177.5	13	6	90	230	M24	39.8	22226K	H3126	SR230x13	2
SNL526	115	150	445	380	130	28	35	50	290	190	167.5	177.5	13	6	90	230	M24	39.8	23226K	H2326	SR230x10	1
SNL528	125	150	500	420	150	35	42	50	302	205	177.5	187.5	13	6	98	250	M30	48.8	22228K	H3128	SR250x15	2

## SNL500 Series

SNL528	125	150	500	420	150	35	42	50	302	205	177.5	187.5	13	6	98	250	M30	48.8	23228K	H2328	SR250x10	1
SNL530	135	160	530	450	160	35	42	60	323	220	192.5	202.5	13.5	6	106	270	M30	56.5	22230K	H3130	SR2 70x16.5	2
SNL530	135	160	530	450	160	35	42	60	323	220	192.5	202.5	13.5	6	106	270	M30	56.5	23230K	H2330	SR270x10	1
SNL532	140	170	550	470	160	35	42	60	344	235	202.5	212.5	13.5	6	114	290	M30	63.5	22232K	H3132	SR290x17	2
SNL532	140	170	550	470	160	35	42	60	344	235	202.5	212.5	13.5	6	114	290	M30	63.5	23232K	H2332	SR290x10	1