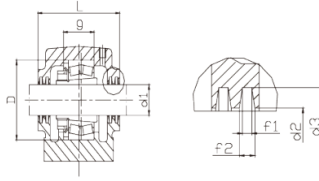
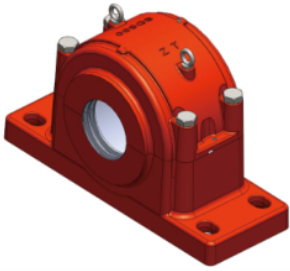


SD500 系列



Lagersitzmodell	Schachtdurchmesser	Abmessungen (mm/in)																	轴承座重量	Lagermodell	Anspannungssatz	Positionierungskreis	
		D	A	B	C	G	H	L	W	M	N	S	u	v	d2	d3	fi	K				Modell	Menge
SD534	150	310	620	230	60	106	180	270	360	510	140	M30	36	52	153	183	10	13.8	92	22234K	H3134	SR310x10	2
SD536	160	320	650	240	60	106	190	280	380	540	150	M30	36	52	163	193	10	13.8	105	22236K	H3136	SR320X10	2
SD538	170	340	700	260	65	112	200	290	400	570	160	M30	36	55	173	203	10	13.8	125	22238K	H3138	SR340x10	2
SD540	180	360	740	270	65	11a	210	300	420	610	170	M30	36	55	183	213	10	13.8	140	22240K	H3140	SR360X10	2
SD544	200	400	B20	300	70	128	240	330	475	68□	190	M36	43	62	203	240	11	15.7	200	22244K	H3144	SR400x10	2
SD548	220	440	880	310	85	140	260	340	515	740	200	M36	43	62	223	260	11	15.7	230	22246K	H3148	SR440X10	2
SD552	240	480	940	340	85	150	280	370	560	790	210	M36	43	62	243	286	12	17.4	300	22252K	H3152	SR480x10	2
SD556	260	500	990	370	100	150	300	390	590	830	230	M42	50	70	263	306	12	17.4	350	22256K	H3156	SR500x10	2
SD560	280	540	1060	390	100	160	325	410	640	690	250	M42	50	70	283	332	13	19.1	450	22260K	H3160	SR540X10	2
SD564	300	580	1110	420	110	170	355	440	690	930	270	M48	58	77	303	352	13	19.1	550	22264K	H3164	SR580x10	2