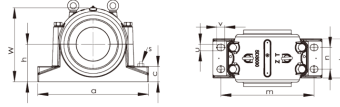
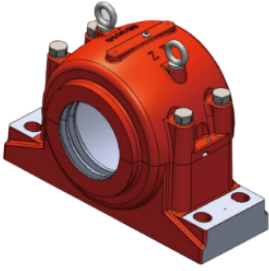


SD3000 系列



Lagersitzmodell	Schachtdurchmesser	Abmessungen (mm/in)																	轴承座重量	Lagermodell	Anspannungssatz	Positionierungskreis	
		D	A	B	C	G	H	L	W	M	N	S	u	v	d2	d3	fi	K				Modell	Menge
SD3034	150	260	540	200	50	77	160	230	320	450	M30	110	36	52	153	183	10	13B	62	23D34K	H3034	SR260X1D	1
SD3036	160	280	560	220	50	84	170	250	340	470	M30	120	36	52	163	193	10	13.8	78	23036K	H3036	SR280x10	1
SD3038	170	290	560	220	50	85	170	250	345	470	M30	120	36	52	173	203	10	13.8	82	23038K	H3038	SR290x10	1
SD3040	180	310	620	230	60	92	180	270	360	510	M30	140	36	52	183	213	10	13.8	92	23040K	H3040	SR310X10	1
SD3044	200	340	700	260	65	100	200	290	400	570	M30	160	36	55	203	240	11	15.7	125	23044K	H3044	SR340x10	1
SD3048	220	360	740	270	65	102	210	300	420	610	M30	170	36	55	223	260	11	15.7	140	23048K	H3048	SR360x10	1
SD3052	240	400	820	300	70	114	240	330	475	680	M36	190	43	62	243	286	12	17.4	200	23052K	H3052	SR400X10	1
SD3056	260	420	860	320	85	116	250	350	500	710	M36	200	43	62	263	306	12	17.4	230	23056K	H3056	SR420X10	1
SD3060	280	460	920	330	85	128	280	360	550	770	M36	210	43	62	283	332	13	19.1	290	23060K	H3060	SR460x10	1
SD3064	300	480	940	340	85	131	280	370	560	790	M36	210	43	62	303	352	13	19.1	300	23064K	H3064	SR480x10	1
SD3068	320	520	1020	370	100	143	310	400	615	860	M42	230	50	70	323	372	13	19.1	400	23068K	H3068	SR520)d0	1
SD3072	340	540	1060	390	100	144	325	410	640	890	M42	250	50	70	343	392	13	19.1	450	23072K	H3072	SR540x10	1
SD3076	360	560	1080	390	100	145	340	410	665	900	M42	260	50	70	363	412	13	19.1	470	23076K	H3076	SR560x10	1