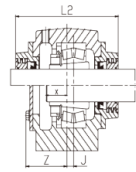
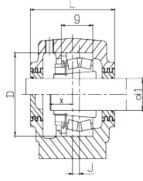
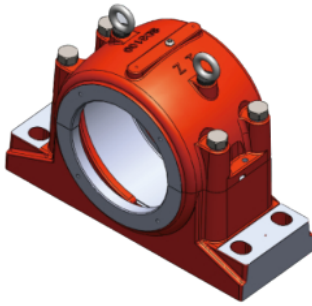


SD3100 系列



Lagersitzmodell	Schachtdurchmesser	Abmessungen (mm/in)																	轴承座重量	Lagermodell	Anspannungssatz	Positionierungskreis	
		D	A	B	C	G	H	L	W	M	N	S	u	v	d2	d3	fi	K				Modell	Menge
SD3134	150	280	510	180	70	108	170	230	308	335	430	100	30	36	14	65	120	70	23134K	H3134	HE3134	SR2S0X10	2
SD3136	160	300	530	190	75	116	180	240	318	355	450	110	30	36	15	68	130	79	23136K	H3136	HE3136	SR300X10	2
SD3138	170	320	560	210	0	124	190	260	336	375	480	120	30	36	10	80	140	100	23138K	H3130	HE3138	SR320X10	2
SD3140	180	340	610	230	85	132	210	280	356	410	510	130	35	40	10	82	150	130	23140K	H3140	HE3140	SR340x10	2
SD3144	200	370	640	240	90	140	220	290	368	435	540	140	35	40	12	90	155	146	23144K	H3144	HE3144	SR370x10	2
SD3148	220	400	700	260	95	148	240	310	386	475	600	150	35	40	12	100	160	190	23148K	H3148	HE3148	SR400X10	2
SD3152	240	440	770	280	100	1B4	260	320	400	515	650	160	40	48	13	105	170	230	23152K	H3152	HE3152	SR440X10	2
SD3156	260	460	790	200	105	166	280	320	400	550	670	160	42	50	16	105	170	260	23156K	H3156	HE3156	SR460X10	2
SD3160	200	500	830	310	110	150	300	350	426	590	710	190	42	60	22	110	190	320	23160K	H3160	HE3160	SR500X10	2
SD3164	300	540	880	330	115	196	320	370	448	630	750	200	42	60	23	120	200	350	23164K	H3164	HE3164	SR540X10	2
SD3168	320	580	965	380	120	210	340	390	488	670	840	240	49	59	25	135	220	550	23168K	H3168	HE3168	SR580x10	2
SD3172	340	600	1040	390	130	212	360	390	498	720	890	255	49	59	22	145	225	560	23172K	H3172	HE3172	SR600X10	2
SD3176	360	620	1120	400	135	214	380	405	520	750	980	255	60	72	22	145	240	780	23176K	H3176	HE3176	SR620X10	2
SD3180	380	650	1245	420	140	220	400	405	552	790	1050	270	65	78	22	150	260	885	23180K	H3180	HE3180	SR650X10	2