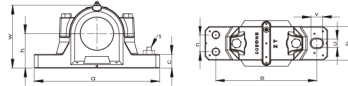
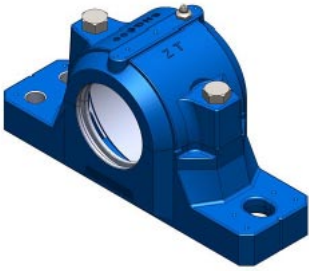


SNG500 系列



Lagersitzmodell	Schachtdurchmesser	尺寸																	Lagergewicht (kg)	Lagermodell	Anspannungssatz	Positionierungskreis		
		H	A	e	B	u	V	C	W	L	d1	d2	N	J	F	G	Da	S				Modell	Menge	
		2	4																					
SNG505	20	40	165	130	46	13	20	19	71	67	31.5	39.5	-	7.5	5	25	52	M10	-	1.9	1205K	H205	SR52x5	2
SNG506-605	25	50	185	150	52	13	22	22	87	77	36.5	44.5	-	7.5	5	32	62	M10	-	2.2	1206K	H206	SR62x5	2
SNG507-606	30	50	185	150	52	13	20	22	92	82	46.5	54.5	-	7.5	5	34	72	M10	-	2.4	1207K	H207	SR72x8.5	2
SNG507-606	30	50	185	150	52	13	20	22	92	82	46.5	54.5	-	7.5	5	34	72	M10	-	2.4	22207K	H307	SR72x5.5	2
SNG508-607	35	60	205	170	60	15	20	25	106	85	51.5	59.5	-	7.5	5	39	80	M12	-	3.2	1208K	H208	SR80x10.5	2
SNG508-607	35	60	205	170	60	15	20	25	106	85	51.5	59.5	-	7.5	5	39	80	M12	-	3.2	22208K	H308	SR80x8	2
SNG509	40	60	205	170	60	15	20	25	109	85	56.5	64.5	-	8.5	5	30	85	M12	-	3.5	1209K	H209	SR85x5.5	2
SNG509	40	60	205	170	60	15	20	25	109	85	56.5	64.5	-	8.5	5	30	85	M12	-	3.5	22209K	H309	SR85x7	1
SNG510-608	45	60	205	170	60	15	20	25	112	90	62	70.5	-	8.5	5	41	90	M12	-	3.85	1210K	H210	SR90x10.5	2
SNG510-608	45	60	205	170	60	15	20	25	112	90	62	70.5	-	8.5	5	41	90	M12	-	3.85	2221 OK	H310	SR90x9	2
SNG511-609	50	70	255	210	70	18	23	28	127	95	67	75.5	35	8.5	5	44	100	M16	M12	5.2	1211K	H211	SR100x11.5	2
SNG511-609	50	70	255	210	70	18	23	28	127	95	67	75.5	35	8.5	5	44	100	M16	M12	5.2	22211K	H311	SR100x9.5	2
SNG512-610	55	70	255	210	70	18	23	30	133	105	72	80.5	35	8.5	5	48	110	M16	M12	6.7	1212K	H212	SR110x13	2
SNG512-610	55	70	255	210	70	18	23	30	133	105	72	80.5	35	8.5	5	48	110	M16	M12	6.7	22212K	H312	SR110x10	2
SNG513-611	60	80	275	230	80	18	24	30	148	110	77	85.5	35	8.5	5	51	120	M16	M12	7.9	1213K	H213	SR120x14	2
SNG513-611	60	80	275	230	80	18	24	30	148	110	77	85.5	35	8.5	5	51	120	M16	M12	7.9	22213K	H313	SR120x10	2
SNG515-612	65	80	280	230	80	18	26	30	154	115	87	95.5	40	8.5	5	56	130	M16	M12	7.7	1215K	H215	SR130x15.5	2
SNG515-612	65	80	280	230	80	18	26	30	154	115	87	95.5	40	8.5	5	56	130	M16	M12	7.7	22215K	H315	SR130x12.5	2
SNG516-613	70	95	315	260	90	22	29	32	175	120	92.5	101	40	10.5	5	58	140	M20	M12	11	1216K	H216	SR140x16	2
SNG516-613	70	95	315	260	90	22	29	32	175	120	92.5	101	40	10.5	5	58	140	M20	M12	11	22216K	H316	SR140x12.5	2
SNG517	75	95	320	260	90	22	30	32	181	125	97.5	106	50	10.5	5	61	150	M20	M12	12.7	1217K	H217	SR150x16.5	2
SNG517	75	95	320	260	90	22	30	32	181	125	97.5	106	50	10.5	5	61	150	M20	M12	12.7	22217K	H317	SR150x12.5	2
SNG518-615	80	100	345	290	100	22	27	35	192	140	102.5	111	50	10.5	5	65	160	M20	M16	14.8	1218K	H218	SR160x17.5	2
SNG518-615	80	100	345	290	100	22	27	35	192	140	102.5	111	50	10.5	5	65	160	M20	M16	14.8	22218K	H318	SR160x12.5	2
SNG518-615	80	100	345	290	100	22	27	35	192	140	102.5	111	50	10.5	5	65	160	M20	M16	14.8	23218K	H2318	SR160x12.5	1
SNG519-616	85	112	345	290	100	22	27	35	209	145	131	141	50	11.5	6	68	170	M20	M16	15.5	1219K	H219	SR170x18	2
SNG519-616	85	112	345	290	100	22	27	35	209	145	131	141	50	11.5	6	68	170	M20	M16	15.5	22219K	H319	SR170x12.5	2
SNG520-617	90	112	380	320	110	26	32	40	215	160	137.5	147.5	60	11.5	6	70	180	M24	M16	18.4	22220K	H320	SR180x12	2
SNG520-617	90	112	380	320	110	26	32	40	215	160	137.5	147.5	60	11.5	6	70	180	M24	M16	18.4	23220K	H2320	SR180x9.7	1
SNG522-619	100	125	410	350	120	26	32	45	239	175	147.5	157.5	70	11.5	6	80	200	M24	M16	24.8	1222K	H222	SR200x21	2
SNG522-619	100	125	410	350	120	26	32	45	239	175	147.5	157.5	70	11.5	6	80	200	M24	M16	24.8	22222K	H322	SR200x13.5	2
SNG522-619	100	125	410	350	120	26	32	45	239	175	147.5	157.5	70	11.5	6	80	200	M24	M16	24.8	23222K	H2322	SR200x10.2	1
SNG524-620	110	140	410	350	120	26	32	45	271	185	157.5	167.5	70	11.5	6	86	215	M24	M16	32.2	22224K	H3124	SR215x14	2
SNG524-620	110	140	410	350	120	26	32	45	271	185	157.5	167.5	70	11.5	6	86	215	M24	M16	32.2	23224K	H2324	SR215x10	1
SNG526	115	150	445	380	130	28	35	50	290	190	167.5	177.5	70	13	6	90	230	M24	M20	39.8	22226K	H3126	SR230x13	2
SNG526	115	150	445	380	130	28	35	50	290	190	167.5	177.5	70	13	6	90	230	M24	M20	39.8	23226K	H2326	SR230x10	1
SNG528	125	150	500	420	150	35	42	50	302	205	177.5	187.5	80	13	6	98	250	M30	M24	48.8	22228K	H3128	SR250x15	2
SNG528	125	150	500	420	150	35	42	50	302	205	177.5	187.5	80	13	6	98	250	M30	M24	48.8	23228K	H2328	SR250x10	1
SNG530	135	160	530	450	160	35	42	60	323	220	192.5	202.5	90	13.5	6	106	270	M30	M24	56.5	22230K	H3130	SR270x16.5	2
SNG530	135	160	530	450	160	35	42	60	323	220	192.5	202.5	90	13.5	6	106	270	M30	M24	56.5	23230K	H2330	SR270x10	1
SNG532	140	170	550	470	160	35	42	60	344	235	202.5	212.5	90	13.5	6	114	290	M30	M24	63.5	22232K	H3132	SR290x17	2
SNG532	140	170	550	470	160	35	42	60	344	235	202.5	212.5	90	13.5	6	114	290	M30	M24	63.5	23232K	H2332	SR290x10	1