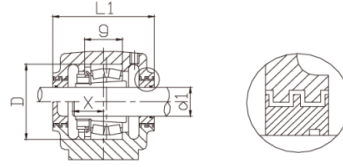
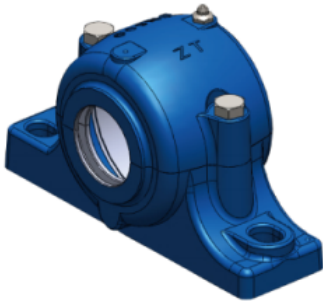


SN500 系列



Lagersitzmodell	Schachtdurchmesser	尺寸																	Lagergewicht (kg)	Lagermodell		Anspannungssatz		Positionierungskreis			
		D	A	B	C	G	H	L	L1	W	N	M	S	u	v	x	d ₂	d ₃		f ₁	f ₂	1	2	1	2	Modell	Menge
SN505	20	52	165	46	22	25	40	67	70	75	25	130	M12	15	20	22	21.5	31	3	4.2	1.4	1205K	22205K	H205	HE205	SR52x5	2
SN505	20	52	165	46	22	25	40	67	70	75	25	130	M12	15	20	22	21.5	31	3	4.2	1.4	2205K	22205K	H305	HE305	SR52x7	1
SN506	25	62	185	52	22	30	50	77	80	90	25	150	M12	15	20	22	26.5	38	4	5.4	2.15	1206K	22206K	H206	HE206	SR62x7	2
SN506	25	62	185	52	22	30	50	77	80	90	25	150	M12	15	20	22	26.5	38	4	5.4	2.15	2206K	22206K	H306	HE306	SR62x10	1
SN507	30	72	185	52	22	33	50	82	85	95	25	150	M12	15	20	24	31.5	43	4	5.4	2.35	1207K	22207K	H207	HE207	SR72x8	2
SN507	30	72	185	52	22	33	50	82	85	95	25	150	M12	15	20	24	31.5	43	4	5.4	2.35	2207K	22207K	H307	HE307	SR72x10	1
SN508	35	80	205	60	25	33	60	85	90	110	30	170	M12	15	20	26	36.5	48	4	5.4	3.2	1208K	22208K	H208	HE208	SR80x7.5	2
SN508	35	80	205	60	25	33	60	85	90	110	30	170	M12	15	20	26	36.5	48	4	5.4	3.2	2208K	22208K	H308	HE308	SR80x10	1
(S)SN509	40	85	205	60	25	31	60	85	90	112	30	170	M12	15	20	28	41.5	53	4	5.4	3(4.4)	1209K	22209K	H209	HE209	SR85x6	2
(S)SN509	40	85	205	60	25	31	60	85	90	112	30	170	M12	15	20	28	41.5	53	4	5.4	3(4.4)	2209K	22209K	H309	HE309	SR85x8	1
(S)SN510	45	90	205	60	25	33	60	90	95	115	30	170	M12	15	20	28	46.5	58	4	5.4	3.75(5)	1210K	22210K	H210	HE210	SR90x6.5	2
(S)SN510	45	90	205	60	25	33	60	90	95	115	30	170	M12	15	20	28	46.5	58	4	5.4	3.75(5)	2210K	22210K	H310	HE310	SR90x10	1
(S)SN511	50	100	255	70	28	33	70	95	100	130	35	210	M16	18	23	30	51.5	67	5	6.9	5.3(7.15)	1211K	22211K	H211	HE211	SR100x6	2
(S)SN511	50	100	255	70	28	33	70	95	100	130	35	210	M16	18	23	30	51.5	67	5	6.9	5.3(7.15)	2211K	22211K	H311	HE311	SR100x8	1
(S)SN512	55	110	255	70	30	38	70	105	110	135	35	210	M16	18	23	32	56.5	72	5	6.9	6.3(7.95)	1212K	22212K	H212	HE212	SR110x8	2
(S)SN512	55	110	255	70	30	38	70	105	110	135	35	210	M16	18	23	32	56.5	72	5	6.9	6.3(7.95)	2212K	22212K	H312	HE312	SR110x10	1
(S)SN513	60	120	275	80	30	43	80	110	115	150	40	230	M16	18	23	36	62	77	5	6.8	6.8(9.9)	1213K	22213K	H213	HE213	SR120x10	2
(S)SN513	60	120	275	80	30	43	80	110	115	150	40	230	M16	18	23	36	62	77	5	6.8	6.8(9.9)	2213K	22213K	H313	HE313	SR120x12	1
(S)SN515	65	130	280	80	30	41	80	115	120	155	40	230	M16	18	23	38	67	82	5	6.8	7.4(9.3)	1215K	22215K	H215	HE215	SR130x8	2
(S)SN515	65	130	280	80	30	41	80	115	120	155	40	230	M16	18	23	38	67	82	5	6.8	7.4(9.3)	2215K	22215K	H315	HE315	SR130x10	1
(S)SN516	70	140	315	90	32	43	95	120	125	175	50	260	M20	22	27	40	72	89	6	8.1	11.4(14.5)	1216K	22216K	H216	HE216	SR140x8.5	2
(S)SN516	70	140	315	90	32	43	95	120	125	175	50	260	M20	22	27	40	72	89	6	8.1	11.4(14.5)	2216K	22216K	H316	HE316	SR140x10	1
(S)SN517	75	150	320	90	32	46	95	125	130	185	50	260	M20	22	27	42	77	94	6	8.1	11.1(15.5)	1217K	22217K	H217	HE217	SR150x9	2
(S)SN517	75	150	320	90	32	46	95	125	130	185	50	260	M20	22	27	42	77	94	6	8.1	11.1(15.5)	2217K	22217K	H317	HE317	SR150x10	1
(S)SN518	80	160	345	100	35	62.4	100	145	150	195	50	290	M20	22	27	50	82	99	6	8.1	17(20.2)	1218K	22218K	H218	HE218	SR160x16.2	2
(S)SN518	80	160	345	100	35	62.4	100	145	150	195	50	290	M20	22	27	50	82	99	6	8.1	17(20.2)	2218K	23218K	H318	HE318	SR160x11.2	1
(S)SN518	80	160	345	100	35	62.4	100	145	150	195	50	290	M20	22	27	50	82	99	6	8.1	17(20.2)	2218K	23218K	H2318	HE2318	SR160x10	1
(S)SN519	85	170	345	100	35	53	112	140	145	210	50	290	M20	22	27	52	87	104	6	8.1	15.5	1219K	22219K	H219	HE219	SR170x10.5	2
(S)SN519	85	170	345	100	35	53	112	140	145	210	50	290	M20	22	27	52	87	104	6	8.1	15.5	2219K	22219K	H319	HE319	SR170x10	1
(S)SN520	90	180	380	110	40	70.3	112	160	165	218	60	320	M24	26	32	54	92	111	7	9.3	23(27.5)	2220K	22220K	H320	HE320	SR180x12.1	2
(S)SN520	90	180	380	110	40	70.3	112	160	165	218	60	320	M24	26	32	54	92	111	7	9.3	23(27.5)	2220K	23220K	H2320	HE2320	SR180x10	1
(S)SN522	100	200	410	120	45	80	125	175	180	240	70	350	M24	26	32	60	102	125	8	10.8	29(35)	2222K	22222K	H322	HE322	SR200x13.5	2
(S)SN522	100	200	410	120	45	80	125	175	180	240	70	350	M24	26	32	60	102	125	8	10.8	29(35)	2222K	23222K	H2322	HE2322	SR200x10	1
(S)SN524	110	215	410	120	45	86	140	185	190	270	70	350	M24	26	32	64	113	135	8	10.7	33.6(43.8)	-	22224K	H3124	HE3124	SR215x14	2
(S)SN524	110	215	410	120	45	86	140	185	190	270	70	350	M24	26	32	64	113	135	8	10.7	33.6(43.8)	-	23224K	H2324	HE2324	SR215x10	1
(S)SN526	115	230	445	130	50	90	150	190	195	290	70	380	M24	28	36	64	118	140	8	10.7	41(50.4)	-	22226K	H3126	HE3126	SR230x13	2
(S)SN526	115	230	445	130	50	90	150	190	195	290	70	380	M24	28	36	64	118	140	8	10.7	41(50.4)	-	23226K	H2326	HE2326	SR230x10	1
(S)SN528	125	250	500	150	50	98	150	205	210	305	80	420	M30	33	42	70	128	154	9	12.2	49(62)	-	22228K	H3128	HE3128	SR250x15	2
(S)SN528	125	250	500	150	50	98	150	205	210	305	80	420	M30	33	42	70	128	154	9	12.2	49(62)	-	23228K	H2328	HE2328	SR250x10	1
(S)SN530	135	270	530	160	60	106	160	220	225	325	90	450	M30	33	42	76	138	164	9	12.2	60(75)	-	22230K	H3130	HE3130	SR270x16.5	2
(S)SN530	135	270	530	160	60	106	160	220	225	325	90	450	M30	33	42	76	138	164	9	12.2	60(75)	-	23230K	H2330	HE2330	SR270x10	1
(S)SN532	140	290	550	160	60	114	170	235	240	345	90	470	M30	33	42	80	143	173	10	13.7	68.8(87)	-	22232K	H3132	HE3132	SR290x17	2
(S)SN532	140	290	550	160	60	114	170	235	240	345	90	470	M30	33	42	80	143	173	10	13.7	68.8(87)	-	23232K	H2332	HE2332	SR290x10	1