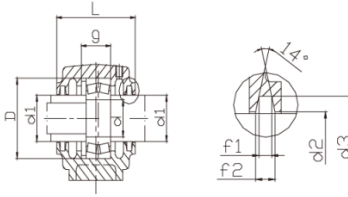
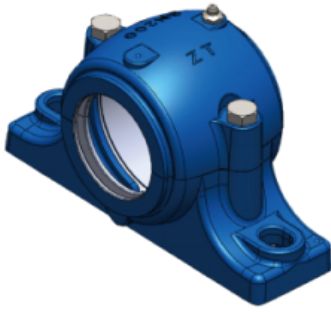


SN200 系列



Lagersitzmodell	Schachtdurchmesser		尺寸																Lagergewicht (kg)	Lagermodell	Anspannungssatz	Positionierungskreis	
	D:	d1	D	A	B	C	G	H	L	W	M	S	u	v	f ₁	f ₂	d ₂	d ₃				Modell	Menge
SN205	25	30	52	165	46	22	25	40	67	75	130	M12	15	20	4	5.4	31.5	43	1.4	1205	22205	SR52x5	2
SN205	25	30	52	165	46	22	25	40	67	75	130	M12	15	20	4	5.4	31.5	43	1.4	2205	22205	SR52x7	1
SN206	30	35	62	185	52	22	30	50	77	90	150	M12	15	20	4	5.4	36.5	48	1.9	1206	22206	SR62x7	2
SN206	30	35	62	185	52	22	30	50	77	90	150	M12	15	20	4	5.4	36.5	48	1.9	2206	22206	SR62x10	1
SN207	35	45	72	185	52	22	33	50	82	95	150	M12	15	20	4	5.4	46.5	58	2	1207	22207	SR72x8	2
SN207	35	45	72	185	52	22	33	50	82	95	150	M12	15	20	4	5.4	46.5	58	2	2207	22207	SR72x10	1
SN208	40	50	80	205	60	25	33	60	85	110	170	M12	15	20	5	6.9	51.5	67	3	1208	22208	SR80x7.5	2
SN208	40	50	80	205	60	25	33	60	85	110	170	M12	15	20	5	6.9	51.5	67	3	2208	22208	SR80x10	1
SN209	45	55	85	205	60	25	31	60	85	112	170	M12	15	20	5	6.9	56.5	72	3.2	1209	22209	SR85x6	2
SN209	45	55	85	205	60	25	31	60	85	112	170	M12	15	20	5	6.9	56.5	72	3.2	2209	22209	SR85x8	1
SN211	55	65	100	255	70	28	33	70	95	130	210	M16	18	23	5	6.8	67	82	4.5	1211	22211	SR100x6	2
SN211	55	65	100	255	70	28	33	70	95	130	210	M16	18	23	5	6.8	67	82	4.5	2211	22211	SR100x8	1
SN212	60	70	110	255	70	30	38	70	105	135	210	M16	18	23	6	8.1	72	89	5	1212	22212	SR110x8	2
SN212	60	70	110	255	70	30	38	70	105	135	210	M16	18	23	6	8.1	72	89	5	2212	22212	SR110x10	1
SN213	65	75	120	275	80	30	43	80	110	150	230	M16	18	23	6	8.1	77	94	5.4	1213	22213	SR120x10	2
SN213	65	75	120	275	80	30	43	80	110	150	230	M16	18	23	6	8.1	77	94	5.4	2213	22213	SR120x12	1
SN214	70	80	125	275	80	30	44	80	115	155	230	M16	18	23	6	8.1	82	99	6.1	1214	22214	SR125x10	2
SN214	70	80	125	275	80	30	44	80	115	155	230	M16	18	23	6	8.1	82	99	6.1	2214	22214	SR125x13	1
SN215	75	85	130	280	80	30	41	80	115	155	230	M16	18	23	6	8.1	87	104	7.4	1215	22215	SR130x8	2
SN215	75	85	130	280	80	30	41	80	115	155	230	M16	18	23	6	8.1	87	104	7.4	2215	22215	SR130x10	1
SN216	80	90	140	315	90	32	43	95	120	175	260	M20	22	27	7	9.3	92	111	9.5	1216	22216	SR140x8.5	2
SN216	80	90	140	315	90	32	43	95	120	175	260	M20	22	27	7	9.3	92	111	9.5	2216	22216	SR140x10	1
SN217	85	95	150	320	90	32	46	95	125	185	260	M20	22	27	7	9.3	97	116	10	1217	22217	SR150x9	2
SN217	85	95	150	320	90	32	46	95	125	185	260	M20	22	27	7	9.3	97	116	10	2217	22217	SR150x10	1
SN218	90	100	160	345	100	35	62.4	100	145	195	290	M20	22	27	8	10.8	102	125	12.8	1218	22218	SR160x16.2	2
SN218	90	100	160	345	100	35	62.4	100	145	195	290	M20	22	27	8	10.8	102	125	12.8	2218	22218	SR160x16.2	2
SN219	95	110	170	345	100	35	53	112	140	210	290	M20	22	27	8	10.7	113	135	17.8	1219	22219	SR170x10.5	2
SN219	95	110	170	345	100	35	53	112	140	210	290	M20	22	27	8	10.7	113	135	17.8	2219	22219	SR170x10.5	2
SN220	100	115	180	380	110	40	70.3	112	160	218	320	M24	26	32	8	10.7	118	140	19	1220	22220	SR180x12.1	2
SN220	100	115	180	380	110	40	70.3	112	160	218	320	M24	26	32	8	10.7	118	140	19	2220	22220	SR180x12.1	2
SN222	110	125	200	410	120	45	80	125	175	240	350	M24	26	32	9	12.2	128	154	23	1222	22222	SR200x13.5	2
SN222	110	125	200	410	120	45	80	125	175	240	350	M24	26	32	9	12.2	128	154	23	2222	22222	SR200x13.5	2
SN224	120	135	215	410	120	45	86	140	185	270	350	M24	26	32	9	12.2	138	164	25	-	22224	SR215x14	2
SN224	120	135	215	410	120	45	86	140	185	270	350	M24	26	32	9	12.2	138	164	25	-	23224	SR215x10	1
SN226	130	145	230	445	130	50	90	150	190	290	380	M26	28	36	10	13.7	148	178	28	-	22226	SR230x13	2
SN226	130	145	230	445	130	50	90	150	190	290	380	M26	28	36	10	13.7	148	178	28	-	23226	SR230x10	1
SN228	140	155	250	500	150	50	98	150	205	305	420	M30	33	42	10	13.7	158	188	36	-	22228	SR250x15	2
SN228	140	155	250	500	150	50	98	150	205	305	420	M30	33	42	10	13.7	158	188	36	-	23228	SR250x10	1
SN230	150	165	270	530	160	60	106	160	220	325	450	M30	33	42	10	13.7	168	198	45.5	-	22230	SR270x16.5	2
SN230	150	165	270	530	160	60	106	160	220	325	450	M30	33	42	10	13.7	168	198	45.5	-	23230	SR270x10	1
SN232	160	175	290	550	160	60	114	170	235	345	470	M30	33	42	10	13.7	178	208	56.5	-	22232	SR290x17	2
SN232	160	175	290	550	160	60	114	170	235	345	470	M30	33	42	10	13.7	178	208	56.5	-	23232	SR290x10	1