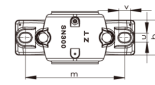
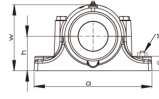
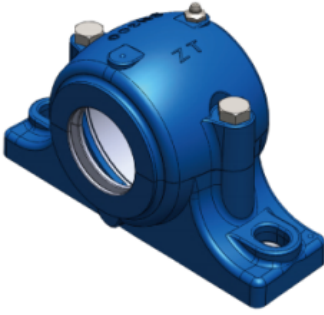


SN300 系列



Lagersitzmodell	Schachtdurchmesser		尺寸																Lagergewicht (kg)	Lagermodell	Anspannungssatz	Positionierungskreis	
	D:	d1	D	A	B	C	G	H	L	W	M	S	u	V	f ₁	f ₂	d ₂	d ₃				Modell	Menge
SN305	25	30	62	185	52	22	34	50	80	90	150	M12	15	20	4	5.4	31.5	43	1.6	1305	-	SR62x8.5	2
SN305	25	30	62	185	52	22	34	50	80	90	150	M12	15	20	4	5.4	31.5	43	1.6	2305	-	SR62x10	1
SN306	30	35	72	185	52	22	37	50	82	95	150	M12	15	20	4	5.4	36.5	48	1.9	1306	-	SR72x9	2
SN306	30	35	72	185	52	22	37	50	82	95	150	M12	15	20	4	5.4	36.5	48	1.9	2306	-	SR72x10	1
SN307	35	45	80	205	60	25	41	60	90	110	170	M12	15	20	4	5.4	46.5	58	2.6	1307	-	SR80x10	2
SN307	35	45	80	205	60	25	41	60	90	110	170	M12	15	20	4	5.4	46.5	58	2.6	2307	-	SR80x10	1
SN308	40	50	90	205	60	25	43	60	95	115	170	M12	15	20	5	6.9	51.5	67	3.2	1308	21308	SR90x10	2
SN308	40	50	90	205	60	25	43	60	95	115	170	M12	15	20	5	6.9	51.5	67	3.2	2308	22308	SR90x10	1
SN309	45	55	100	255	70	28	46	70	105	130	210	M16	18	23	5	6.9	56.5	72	4.5	1309	21309	SR100x10.5	2
SN309	45	55	100	255	70	28	46	70	105	130	210	M16	18	23	5	6.9	56.5	72	4.5	2309	22309	SR100x10	1
SN310	50	60	110	255	70	30	50	70	115	135	210	M16	18	23	5	6.8	62	77	5	1310	21310	SR110x11.5	2
SN310	50	60	110	255	70	30	50	70	115	135	210	M16	18	23	5	6.8	62	77	5	2310	22310	SR110x10	1
SN311	55	65	120	275	80	30	53	80	120	150	230	M16	18	23	5	6.8	67	82	6.6	1311	21311	SR120x12	2
SN311	55	65	120	275	80	30	53	80	120	150	230	M16	18	23	5	6.8	67	82	6.6	2311	22311	SR120x110	1
SN312	60	70	130	280	80	30	56	80	125	155	230	M16	18	23	6	8.1	72	89	7	1312	21312	SR130x12.5	2
SN312	60	70	130	280	80	30	56	80	125	155	230	M16	18	23	6	8.1	72	89	7	2312	22312	SR130x10	1
SN313	65	75	140	315	90	32	58	95	130	175	260	M16	22	27	6	8.1	77	94	8.8	1313	21313	SR140x12.5	2
SN313	65	75	140	315	90	32	58	95	130	175	260	M16	22	27	6	8.1	77	94	8.8	2313	22313	SR140x10	1
SN314	70	80	150	320	90	32	61	95	130	185	260	M20	22	27	6	8.1	82	99	10.3	1314	21314	SR150x13	2
SN314	70	80	150	320	90	32	61	95	130	185	260	M20	22	27	6	8.1	82	99	10.3	2314	22314	SR150x10	1
SN315	75	85	160	345	100	35	65	100	140	195	290	M20	22	27	6	8.1	87	104	11.4	1315	21315	SR160x14	2
SN315	75	85	160	345	100	35	65	100	140	195	290	M20	22	27	6	8.1	87	104	11.4	2315	22315	SR160x10	1
SN316	80	90	170	345	100	35	68	112	145	212	290	M20	22	27	7	9.3	92	111	13	1316	21316	SR170x14.5	2
SN316	80	90	170	345	100	35	68	112	145	212	290	M20	22	27	7	9.3	92	111	13	2316	22316	SR170x10	1
SN317	85	95	180	380	110	40	70	112	155	218	320	M24	26	32	7	9.3	97	116	16	1317	21317	SR180x14.5	2
SN317	85	95	180	380	110	40	70	112	155	218	320	M24	26	32	7	9.3	97	116	16	2317	22317	SR180x10	1
SN318	90	100	190	400	110	33	74	112	160	230	320	M24	26	35	8	10.8	102	125	22.8	1318	-	SR190x15.5	2
SN318	90	100	190	400	110	33	74	112	160	230	320	M24	26	35	8	10.8	102	125	22.8	2318	22318	SR190x10	1
SN319	95	110	200	420	120	36	77	125	170	245	350	M24	26	35	8	10.7	113	135	27.8	1319	22319	SR200x16	2
SN319	95	110	200	420	120	36	77	125	170	245	350	M24	26	35	8	10.7	113	135	27.8	2319	22319	SR200x10	1
SN320	100	115	215	420	120	38	83	140	175	280	350	M24	26	35	8	10.7	118	140	34	2320	22320	SR215x18	2
SN320	100	115	215	420	120	38	83	140	175	280	350	M24	26	35	8	10.7	118	140	34	2320	22320	SR215x10	1
SN322	110	125	240	460	130	40	90	150	190	300	390	M26	28	38	9	12.2	128	154	45	2322	22322	SR240x20	2
SN322	110	125	240	460	130	40	90	150	190	300	390	M26	28	38	9	12.2	128	154	45	2322	22322	SR240x10	1
SN324	120	135	260	540	160	50	96	160	205	325	450	M30	33	42	9	12.2	138	164	62	-	22324	SR260x10	1
SN326	130	150	280	560	160	50	103	170	215	350	470	M30	33	42	10	13.7	153	183	68.8	-	22326	SR280x10	1
SN328	140	160	300	630	170	55	112	180	235	375	520	M30	35	45	10	13.7	163	193	98	-	22328	SR300x10	1
SN330	150	170	320	680	180	55	118	190	245	395	560	M30	35	45	10	13.7	173	203	116	-	22330	SR320x10	1
SN332	160	180	340	710	190	60	124	200	255	415	580	M36	42	52	10	13.7	183	213	135	-	22332	SR340x10	1