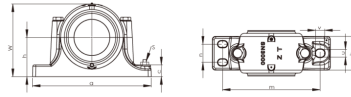
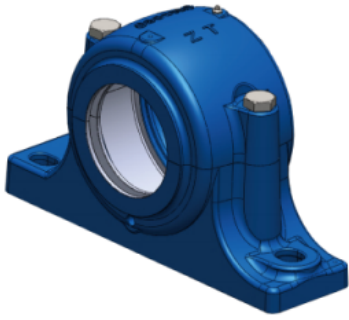


# SN3000 系列



Lagersitzmodell	Wellendurchmesser mm	Größe (mm)																		Lagergewicht (kg)	Lagermodell	Anspannungssatz	Positionierungskreis	
		D	A	B	C	G	H	L	W	M	S	S	N	u	V	d <sub>2</sub>	d <sub>3</sub>	f <sub>1</sub>	f <sub>2</sub>				Modell	Menge
(S)SN3024	110	180	380	110	40	56	112	160	218	320	M24	M16	60	26	32	113	135	8	10.7	17	23024K	H3024	SR 180x10	1
(S)SN3026	115	200	410	120	45	62	125	175	240	350	M24	M16	70	26	32	118	140	8	10.7	20	23026K	H3026	SR200x10	1
(S)SN3028	125	210	410	120	45	63	140	185	270	350	M24	M16	70	26	32	128	154	9	12.2	25	23028K	H3028	SR210x10	1
(S)SN3030	135	225	445	130	50	66	150	175	283	380	M24	M20	70	28	36	138	164	9	12.22	30	23030K	H3030	SR225x10	1
(S)SN3032	140	240	460	130	40	70	150	190	300	390	M24	M20	70	28	38	143	173	10	13.7	37	23032K	H3032	SR240x10	1
(S)SN3034	150	260	540	160	50	77	160	205	325	450	M30	M20	90	33	42	153	183	10	13.7	47	23034K	H3034	SR260x10	1
(S)SN3036	160	280	550	160	50	84	170	215	345	470	M30	M20	90	33	42	163	193	10	13.7	55	23036K	H3036	SR280x10	1
(S)SN3038	170	290	550	160	60	85	170	235	345	470	M30	M24	90	33	42	173	203	10	13.7	53	23038K	H3038	SR290x10	1