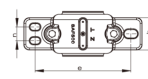
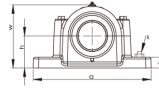
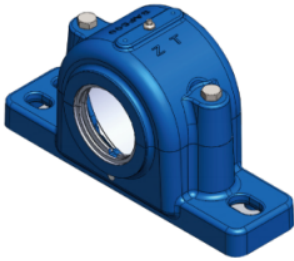


# SAF505-516 系列



Lagersitzmodell	Wellendurchmesser mm	Größe (mm)													Lagergewicht (kg)	Lagermodell	Anspannungssatz	Positionierungskreis	
		D	A	B	C	G	H	L	W	N	e max	e min	s 2	s 4				Modell	Menge
SAF505	3/4	52	165	45	18	25	38.1	70	75		139.7	118	M12		1.8	1205K	HA205	SR52x5	2
SAF505	3/4	52	165	45	18	25	38.1	70	75		139.7	118	M12		1.8	2205K	HA305	SR52x7	1
SAF506	15/16	62	191	51	18	30	44.5	78	86		156	133	M12		2.2	1206K	HA206	SR62x7	2
SAF506	15/16	62	191	51	18	30	44.5	78	86		156	133	M12		2.2	2206K	H306	SR62x10	1
SAF507	1-3/16	72	191	51	21	33	50.8	81	97		156	143	M12		2.7	1207K	HA207	SR72x8	2
SAF507	1-3/16	72	191	51	21	33	50.8	81	97		156	143	M12		2.7	2207K	HA307	SR72x10	1
SAF509	1-7/16	85	210	61	21	31	57.2	87	111		178	159	M12		3.9	1209K	HA209	SR85x6	2
SAF509	1-7/16	85	210	61	21	31	57.2	87	111		178	159	M12		3.9	2209K 22209K	HA309	SR85x8	1
SAF510	1-11/16	90	210	61	24	33	63.5	87	121		178	165	M12		4.3	1210K	HA210	SR90x6.5	2
SAF510	1-11/16	90	210	61	24	33	63.5	87	121		178	165	M12		4.3	2210K 22210K	HA310	SR90x10	1
SAF511	1-15/16	100	245	70	24	33	69.9	95	133		200	188	M16		5	1211K	HA211	SR100x6	2
SAF511	1-15/16	100	245	70	24	33	69.9	95	133		200	188	M16		5	2211K 22211K	HA311	SR100x8	1
SAF513	2-3/16	120	279	80	25	41	76.2	108	151	50.8	241	206	M16	M12	7.7	1213K	HA213	SR120x9	2
SAF513	2-3/16	120	279	80	25	41	76.2	108	151	50.8	241	206	M16	M12	7.7	2213K 22213K	HA313	SR120x10	1
SAF515	2-7/16	130	286	80	29	41	82.6	118	162	47.7	245	219	M16	M12	8.7	1215K	HA215	SR130x8	2
SAF515	2-7/16	130	286	80	29	41	82.6	118	162	47.7	245	219	M16	M12	8.7	2215K 22215K	HA315	SR130x10	1
SAF516	2-11/16	140	330	89	30	43	88.9	121	175	54.4	279	245	M20	M16	11.6	1216K	HA216	SR140x8.5	2
SAF516	2-11/16	140	330	89	30	43	88.9	121	175	54.4	279	245	M20	M16	11.6	2216K 22216K	HA316	SR140x10	1