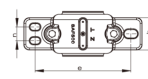
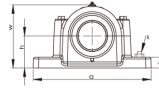
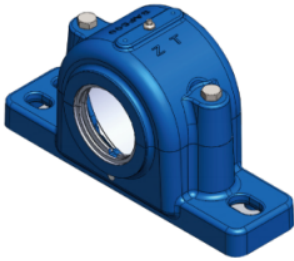


SAF609-613 系列



Lagersitzmodell	Wellendurchmesser mm	Größe (mm)														Lagergewicht (kg)	Lagermodell	Anspannungssatz	Positionierungskreis	
		D	A	B	C	G	H	L	W	N	M Max	m min	s 2	s 4	Modell				Menge	
SAF609	1-7/16	100	245	70	25	46	69.9	105	135		200.2	187.5	M16		7.2	1309k 21309k	HA309	SR100x10.5	2	
SAF609	1-7/16	100	245	70	25	46	69.9	105	135		200.2	187.5	M16		7.2	2309k 22309k	HA2309	SR100x10	1	
SAF610	1-11/16	110	270	70	29	51	76.2	114	148		228.6	196.9	M16		9.2	1310k 21310k	HA310	SR110x11.5	2	
SAF610	1-11/16	110	270	70	29	51	76.2	114	148		228.6	196.9	M16		9.2	2310k 22310k	HA2310	SR110x10	1	
SAF611	1-15/16	120	279	80	30	53	82.6	121	157	51	241.3	206.5	M16	M12	11	1311k 21311k	HA311	SR120x12	2	
SAF611	1-15/16	120	279	80	30	53	82.6	121	157	51	241.3	206.5	M16	M12	11	2311k 22311k	HA2311	SR120x10	1	
SAF613	2-3/16	140	330	90	32	58	88.9	133	176	54	279.4	244.6	M20	M16	13.3	1313k 21313k	HA313	SR140x12.5	2	
SAF613	2-3/16	140	330	90	32	58	88.9	133	176	54	279.4	244.6	M20	M16	13.3	2313k 22313k	HA2313	SR1400x10	1	